

**DONOHUE HEATING SERVICES
TRENCH DATA SHEETS**



Specifications

Introduction

Merriott Trench Radiators combine a finned convector inside a metal casing and top grille to give an optimal efficiency through a combination of convection and radiation.

Paint

Merriott Radiators use a painting process developed by the automotive industry. The components of the radiators are manufactured from pre-treated materials which are sealed to provide maximum corrosion protection. The durable top coat (epoxy polyester powder) is electro statically applied and stove enamel baked at 200°C. The process is monitored to ensure continuous achievement of optimum adhesion, opacity and gloss levels.

Convector

The convector is manufactured from pure aluminum and copper, totally non corrosive with a dirt proof repellent and dust proof lacquer in graphite black (RAL 9005). Rapid heat up efficiency due to low water content

Casing

The trench radiator casing is manufactured from zinc plated metal which is sprayed with a base coat on both sides and is finished with an extra epoxy polyester top coating. A brushed stainless steel option is available on request. Heat insulation can be supplied for either the underside or 3 sides of the casing if requested at a surcharge. The grilles are available in the range of materials and colours. A comprehensive list is provided in this brochure.

Sizing & Heat Emissions

Merriott Trench Radiators offer emissions ranging from 128 Watts to 9554 Watts @ ΔT 50°C. Comprehensive sizing and emission charts are included in this catalogue.

Height

The heights of Merriott Trench Radiators are 90mm, 110mm 140mm and 190mm. Other heights are available on request.

Length

The Merriott Trench Radiators length relates to the overall front panel length and increases in increments of 100mm from a length of 1000mm to 3500mm. Other lengths available on request.

Outputs

The Merriott Trench Radiator outputs are certified in accordance with EN 442 so you are assured of their performance and quality.

Operating Pressure

The Merriott Convectors are tested to a standard pressure of 13 Bar with a maximum working pressure of 10 Bar.

Grilles

The grilles are supplied as standard in a flexible coiled form; rigid grilles are also available on request. The grilles are manufactured from the following material, stainless steel, wood & anodised aluminium.

Grille Type & Colour		
Coiled	Oak	Natural
		Varnished
	Beech	Natural
		Varnished
	Aluminium	Natural
		Light Bronze
		Dark Bronze
		Black
		Gold
	Fixed	Stainless Steel & Aluminium

Connections

The Merriott trench radiator includes 2 No. 100mm long stainless steel hoses with ½" (15mm) male and female treads. Also included are a baffle board and a drain.

Fixings

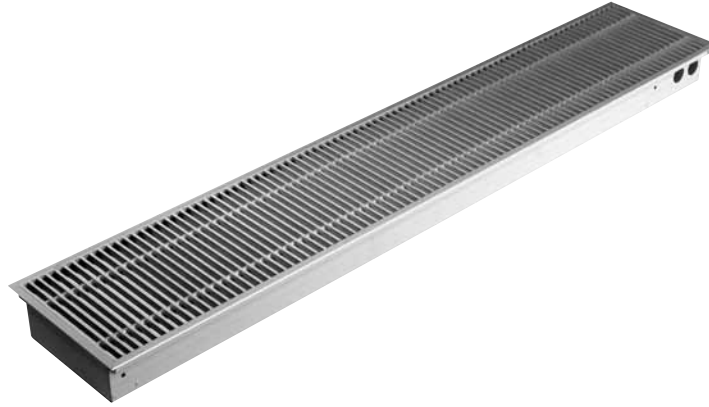
The trench radiator is installed in the top layer of the floor using anchors and bolts for fixing in to the concrete sub-floor. Adjustable bolt sets are included with a range of 0mm to 35mm.

Warranty

Merriott Convector Radiators are guaranteed for a period of ten years in respect of defective materials and workmanship. In order for the warranty to be valid, designers and installers must observe and adhere to **BS EN 12828:2003**. Heating systems in buildings – design for water based heating systems and installers must adhere to **BS EN 14336:2004**. Heating system in buildings – installation and commissioning of water based heating systems. In addition Merriott Radiators recommends that designers and installers observe and adhere to the British Standard code of practice for the treatment of water in domestic hot water central heating systems and **BS 7593:2006**, the use of corrosion inhibitor is recommended for all applications, failure to observe this may result in the invalidation of warranty.

Merriott Natural Trench

Natural 90mm

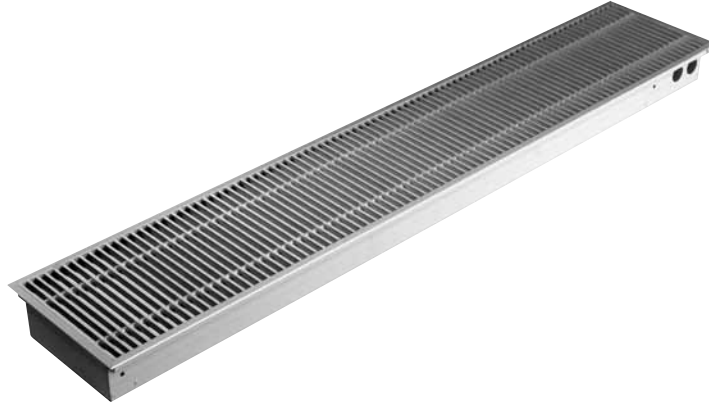


Height (mm)	90	90	90	90	90
Width (mm)	180	260	290	340	420
Merriott Code	BFN18	BFN26	BFN29	BFN34	BFN42
Dry Weight (Kg/m)	5.9	6.4	6.9	8	9.9
Water Content (L/m)	0.3	0.3	0.3	0.4	0.7

Length mm	Output (Watts)		Output (Watts)		Output (Watts)		Output (Watts)		Output (Watts)	
	$\Delta T50$	$\Delta T56$	$\Delta T50$	$\Delta T56$	$\Delta T50$	$\Delta T56$	$\Delta T50$	$\Delta T56$	$\Delta T50$	$\Delta T56$
800	128	150	166	194	171	200	220	257	277	324
900	151	177	196	229	201	235	260	304	327	383
1000	173	202	226	264	232	271	299	350	377	441
1100	196	229	256	300	263	308	338	395	426	498
1200	219	256	285	333	293	343	378	442	476	557
1250	230	269	300	351	308	360	397	464	500	585
1300	242	283	315	369	324	379	417	488	525	614
1400	264	309	345	404	354	414	456	534	575	673
1500	287	336	374	438	385	450	496	580	624	730
1600	310	363	404	473	415	486	535	626	674	789
1700	333	390	434	508	446	522	574	672	723	846
1750	344	402	449	525	461	539	594	695	748	875
1800	356	417	464	543	475	556	614	718	773	904
1900	378	442	493	577	507	593	653	764	822	962
2000	401	469	523	612	537	628	692	810	872	1020
2100	424	496	553	647	568	665	732	856	921	1078
2200	447	523	583	682	598	700	771	902	971	1136
2250	458	536	597	698	614	718	791	925	996	1165
2300	470	550	612	716	629	736	810	948	1021	1195
2400	495	579	642	751	659	771	850	995	1070	1252
2500	515	603	672	786	690	807	889	1040	1120	1310
2600	538	629	701	820	720	842	928	1086	1169	1368
2700	561	656	731	855	751	879	968	1133	1219	1426
2750	572	669	746	873	766	896	987	1155	1243	1454
2800	584	683	761	890	781	914	1007	1178	1268	1484
2900	606	709	791	925	812	950	1046	1224	1318	1542
3000	629	736	820	959	843	986	1086	1271	1367	1599
3100	652	763	850	995	873	1021	1125	1316	1417	1658
3200	675	790	880	1030	903	1057	1165	1363	1466	1715
3250	686	803	895	1047	918	1074	1184	1385	1491	1744
3300	698	817	909	1064	934	1093	1204	1409	1516	1774
3400	720	842	939	1099	965	1129	1243	1454	1565	1831
3500	743	869	969	1134	995	1164	1283	1501	1615	1890

Merriott Natural Trench

Natural 110mm

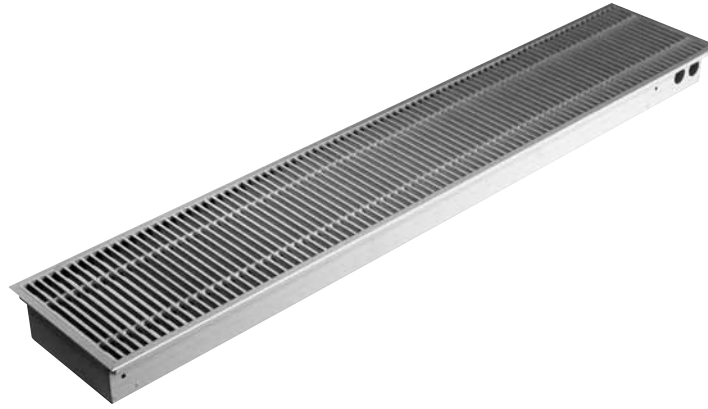


Height (mm)	110	110	110	110	110
Width (mm)	180	260	290	340	420
Merriott Code	BFN18	BFN26	BFN29	BFN34	BFN42
Dry Weight (Kg/m)	6.1	6.7	7.1	8.3	10.2
Water Content (L/m)	0.3	0.3	0.3	0.4	0.7

Length mm	Output (Watts)		Output (Watts)		Output (Watts)		Output (Watts)		Output (Watts)	
	$\Delta T50$	$\Delta T56$	$\Delta T50$	$\Delta T56$	$\Delta T50$	$\Delta T56$	$\Delta T50$	$\Delta T56$	$\Delta T50$	$\Delta T56$
800	147	172	196	229	218	255	260	304	319	373
900	173	202	231	270	257	301	307	359	376	440
1000	199	233	266	311	296	346	353	413	432	505
1100	225	263	301	352	335	392	399	467	489	572
1200	251	294	336	393	374	438	446	522	546	639
1250	265	310	354	414	393	460	469	549	575	673
1300	278	325	371	434	413	483	492	576	603	706
1400	304	356	406	475	452	529	539	631	660	772
1500	330	386	441	516	491	574	585	684	717	839
1600	356	417	477	558	530	620	632	739	774	906
1700	382	447	512	599	569	666	678	793	831	972
1750	395	462	527	617	588	688	701	820	859	1005
1800	409	479	547	640	608	711	724	847	888	1039
1900	435	509	582	681	647	757	771	902	945	1106
2000	461	539	617	722	685	801	817	956	1002	1172
2100	487	570	652	763	724	847	864	1011	1059	1239
2200	513	600	687	804	763	893	910	1065	1115	1305
2250	523	612	704	824	783	916	933	1092	1144	1338
2300	539	631	722	845	802	938	957	1120	1172	1371
2400	566	662	757	886	841	984	1003	1174	1229	1438
2500	592	693	792	927	880	1030	1050	1229	1286	1505
2600	618	723	827	968	919	1075	1096	1282	1343	1571
2700	644	753	862	1009	958	1121	1142	1336	1400	1638
2750	657	769	879	1028	978	1144	1166	1364	1428	1671
2800	670	784	879	1028	997	1166	1189	1391	1457	1705
2900	697	815	932	1090	1036	1212	1235	1445	1514	1771
3000	723	846	967	1131	1073	1255	1282	1500	1571	1838
3100	749	876	1002	1172	1114	1303	1328	1554	1628	1905
3200	775	907	1037	1213	1155	1351	1375	1609	1684	1970
3250	788	922	1055	1234	1175	1375	1398	1636	1713	2004
3300	801	937	1072	1254	1192	1395	1421	1663	1741	2037
3400	827	968	1107	1295	1233	1443	1467	1716	1798	2104
3500	854	999	1142	1336	1270	1486	1514	1771	1855	2170

Merriott Natural Trench

Natural 140mm

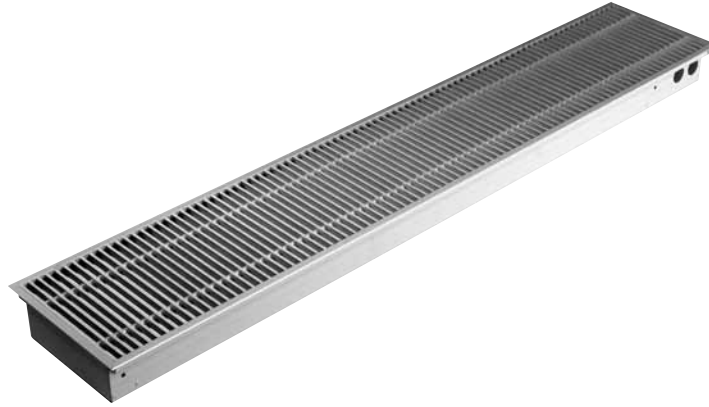


Height (mm)	140	140	140	140	140
Width (mm)	180	260	290	340	420
Merriott Code	BFN18	BFN26	BFN29	BFN34	BFN42
Dry Weight (Kg/m)	7.8	8.4	8.8	10.8	14.1
Water Content (L/m)	0.7	0.7	0.7	1	1.4

Length mm	Output (Watts)		Output (Watts)		Output (Watts)		Output (Watts)		Output (Watts)	
	$\Delta T50$	$\Delta T56$	$\Delta T50$	$\Delta T56$	$\Delta T50$	$\Delta T56$	$\Delta T50$	$\Delta T56$	$\Delta T50$	$\Delta T56$
800	161	188	242	283	266	311	337	394	395	462
900	190	222	285	333	313	366	397	464	466	545
1000	219	256	328	384	361	422	457	535	537	628
1100	248	290	371	434	408	477	517	605	607	710
1200	277	324	415	486	456	534	446	522	678	793
1250	291	340	436	510	480	562	577	675	713	834
1300	305	357	458	536	503	589	607	710	749	876
1400	334	391	501	586	551	645	637	745	819	958
1500	363	425	544	636	598	700	757	886	890	1041
1600	392	459	587	687	646	756	817	956	960	1123
1700	421	493	630	737	693	811	877	1026	1031	1206
1750	435	509	652	763	717	839	907	1061	1066	1247
1800	450	527	674	789	741	867	937	1096	1102	1289
1900	478	559	717	839	788	922	998	1168	1172	1371
2000	507	593	760	889	836	978	1058	1238	1243	1454
2100	536	627	803	940	883	1033	1118	1308	1313	1536
2200	565	661	846	990	931	1089	1178	1378	1384	1619
2250	579	677	868	1016	955	1117	1208	1413	1419	1660
2300	594	695	889	1040	978	1144	1238	1448	1455	1702
2400	622	728	933	1092	1026	1200	1298	1519	1525	1784
2500	651	762	976	1142	1073	1255	1358	1589	1596	1867
2600	680	796	1019	1192	1121	1312	1418	1659	1667	1950
2700	709	830	1062	1243	1168	1367	1478	1729	1737	2032
2750	723	846	1084	1268	1192	1395	1508	1764	1772	2073
2800	738	863	1105	1293	1216	1423	1538	1799	1808	2115
2900	767	897	1148	1343	1263	1478	1598	1870	1878	2197
3000	795	930	1192	1395	1311	1534	1658	1940	1949	2280
3100	824	964	1235	1445	1358	1589	1719	2011	2020	2363
3200	853	998	1278	1495	1406	1645	1779	2081	2090	2445
3250	867	1014	1300	1521	1430	1673	1809	2117	2126	2487
3300	882	1032	1321	1546	1453	1700	1839	2152	2161	2528
3400	911	1066	1364	1596	1501	1756	1899	2222	2231	2610
3500	939	1099	1407	1646	1548	1811	1959	2292	2302	2693

Merriott Natural Trench

Natural 190mm



Height (mm)	190	190	190	190
Width (mm)	260	290	340	420
Merriott Code	BFN26	BFN29	BFN34	BFN42
Dry Weight (Kg/m)	11.1	11.5	13.7	16.3
Water Content (L/m)	0.7	0.7	1.0	1.4

Length	Output (Watts)		Output (Watts)		Output (Watts)		Output (Watts)	
	mm	$\Delta T50$	$\Delta T56$	$\Delta T50$	$\Delta T56$	$\Delta T50$	$\Delta T56$	$\Delta T50$
800	276	323	303	355	384	449	501	586
900	325	380	357	418	452	529	590	690
1000	374	438	411	481	521	610	679	794
1100	423	495	465	544	589	689	769	900
1200	473	553	519	607	657	769	858	1004
1250	497	581	547	640	691	808	903	1057
1300	522	611	573	670	726	849	948	1109
1400	571	668	628	735	794	929	1037	1213
1500	620	725	681	797	862	1009	1126	1317
1600	669	783	736	861	931	1089	1216	1423
1700	718	840	789	923	999	1169	1305	1527
1750	743	869	817	956	1033	1209	1350	1580
1800	768	899	844	987	1067	1248	1395	1632
1900	817	956	898	1051	1137	1330	1484	1736
2000	866	1013	952	1114	1205	1410	1573	1840
2100	915	1071	1006	1177	1273	1489	1663	1946
2200	964	1128	1060	1240	1342	1570	1752	2050
2250	989	1157	1088	1273	1376	1610	1797	2102
2300	1013	1185	1114	1303	1410	1650	1842	2155
2400	1063	1244	1169	1368	1478	1729	1931	2259
2500	1112	1301	1222	1430	1547	1810	2020	2363
2600	1161	1358	1277	1494	1615	1890	2110	2469
2700	1210	1416	1330	1556	1683	1969	2199	2573
2750	1235	1445	1358	1589	1718	2010	2244	2625
2800	1259	1473	1385	1620	1752	2050	2289	2678
2900	1308	1530	1439	1684	1820	2129	2378	2782
3000	1358	1589	1493	1747	1888	2209	2467	2886
3100	1407	1646	1547	1810	1958	2291	2557	2992
3200	1456	1704	1601	1873	2026	2370	2646	3096
3250	1481	1733	1628	1905	2060	2410	2691	3148
3300	1505	1761	1655	1936	2095	2451	2736	3201
3400	1554	1818	1710	2001	2163	2531	2825	3305
3500	1607	1880	1764	2064	2236	2616	2914	3409

Merriott Ventilated Trench

Ventilated 90mm



Height (mm)
Width (mm)
Merriott Code

90
260
BFV26

90
290
BFV29

90
340
BFV34

Dry Weight (Kg/m)
Water Content (L/m)

7.8
0.3

8.7
0.4

10.1
0.7

Length
mm
800
900
1000
1100
1200
1250
1300
1400
1500
1600
1700
1750
1800
1900
2000
2100
2200
2250
2300
2400
2500
2600
2700
2750
2800
2900
3000
3100
3200
3250
3300
3400
3500

Output (Watts)	
ΔT50	ΔT56
781	883
920	1040
1060	1198
1199	1355
1408	1591
1408	1591
1478	1670
1548	1749
1757	1985
1757	1985
2035	2300
2035	2300
2175	2458
2175	2458
2454	2773
2593	2930
2733	3088
2733	3088
2733	3088
2733	3088
2872	3245
3151	3561
3290	3718
3430	3876
3430	3876
3430	3876
3569	4033
3848	4348
3848	4348
3987	4505
4127	4664
4127	4664
4406	4979
4406	4979

Output (Watts)	
ΔT50	ΔT56
1016	1148
1197	1353
1379	1558
1560	1763
1742	1968
1742	1968
1923	2173
2014	2276
2286	2583
2286	2583
2649	2993
2649	2993
2830	3198
2830	3198
3193	3608
3374	3813
3556	4018
3556	4018
3556	4018
3556	4018
3737	4223
4100	4633
4282	4839
4463	5043
4463	5043
4463	5043
4644	5248
5007	5658
5007	5658
5189	5864
5370	6068
5370	6068
5733	6478
5733	6478

Output (Watts)	
ΔT50	ΔT56
1190	1345
1402	1584
1614	1824
1827	2065
2146	2425
2146	2425
2252	2545
2358	2665
2677	3025
2677	3025
3101	3504
3101	3504
3314	3745
3314	3745
3739	4225
3951	4465
4164	4705
4164	4705
4164	4705
4164	4705
4376	4945
4801	5425
5013	5665
5226	5905
5226	5905
5226	5905
5438	6145
5863	6625
5863	6625
6075	6865
6288	7105
6288	7105
6713	7586
6713	7586

Merriott Ventilated Trench

Ventilated 140mm



Height (mm)
Width (mm)
Merriott Code

140
260
BFV26

140
290
BFV29

140
340
BFV34

Dry Weight (Kg/m)
Water Content (L/m)

9.7
0.7

11.2
1

13.9
1.4

Length
mm
800
900
1000
1100
1200
1250
1300
1400
1500
1600
1700
1750
1800
1900
2000
2100
2200
2250
2300
2400
2500
2600
2700
2750
2800
2900
3000
3100
3200
3250
3300
3400
3500

Output (Watts)	
ΔT50	ΔT56
1142	1290
1346	1521
1150	1300
1754	1982
2060	2328
2060	2328
2162	2443
2264	2558
2570	2904
2570	2904
2978	3365
2978	3365
3182	3596
3182	3596
3590	4057
3794	4287
3998	4518
3998	4518
3998	4518
4202	4748
4610	5209
4813	5439
5017	5669
5017	5669
5017	5669
5221	5900
5629	6361
5629	6361
5833	6591
6037	6822
6037	6822
6445	7283
6445	7283

Output (Watts)	
ΔT50	ΔT56
1496	1690
1763	1992
2030	2294
2298	2597
2698	3049
2698	3049
2832	3200
2966	3352
3366	3804
3366	3804
3901	4408
3901	4408
4168	4710
4168	4710
4702	5313
4969	5615
5236	5917
5236	5917
5236	5917
5504	6220
6038	6823
6305	7125
6572	7426
6572	7426
6572	7426
6840	7729
7374	8333
7374	8333
7641	8634
7908	8936
7908	8936
8443	9541
8443	9541

Output (Watts)	
ΔT50	ΔT56
1693	1913
1996	2255
2298	2597
2600	2938
3054	3451
3054	3451
3205	3622
3356	3792
3810	4305
3810	4305
4414	4988
4414	4988
4717	5330
4717	5330
5321	6013
5624	6355
5926	6696
5926	6696
5926	6696
6229	7039
6833	7721
7136	8064
7438	8405
7438	8405
7438	8405
7740	8746
8345	9430
8345	9430
8647	9771
8950	10114
8950	10114
9554	10796
9554	10796

Merriott Ventilated Trench

Ventilated Plus



Height (mm)
Width (mm)
Merriott Code

90
180
BVP18

90
260
BVP26

Dry Weight (Kg/m)
Water Content (L/m)

7.2
0.4

9
0.7

Length
mm
800
900
1000
1100
1200
1250
1300
1400
1500
1600
1700
1750
1800
1900
2000
2100
2200
2250
2300
2400
2500
2600
2700
2750
2800
2900
3000
3100
3200
3250
3300
3400
3500

Output (Watts)	
ΔT50	ΔT56
659	745
659	745
1041	1176
1041	1176
1041	1176
1424	1609
1424	1609
1424	1609
1807	2042
1807	2042
1807	2042
2190	2475
2190	2475
2190	2475
2573	2907
2573	2907
2573	2907
2956	3340
2956	3340
2956	3340
3339	3773
3339	3773
3339	3773
3722	4206
3722	4206
3722	4206
4105	4639
4105	4639
4105	4639
4488	5071
4488	5071
4488	5071
4488	5071

Output (Watts)	
ΔT50	ΔT56
965	1090
965	1090
1525	1723
1525	1723
1525	1723
2086	2357
2086	2357
2086	2357
2647	2991
2647	2991
2647	2991
3208	3625
3208	3625
3208	3625
3769	4259
3769	4259
3769	4259
4329	4892
4329	4892
4329	4892
4890	5526
4890	5526
4890	5526
5451	6160
5451	6160
5451	6160
6012	6794
6012	6794
6012	6794
6573	7427
6573	7427
6573	7427

How to Order

Merriott Radiators Ireland

Derrylin, Co. Fermanagh, Northern Ireland, BT92 9AU

For contact numbers please see below.

Email : sales@merriott-radiators.com

Web : www.merriott-radiators.com

Manufacturing Facility Newport

Merriott Radiators, Imperial Park, Newport, Gwent NP10 8ZY

Tel : +44 (0) 1633 657 000

Fax : +44 (0) 1633 657 084

Irish Enquires

Quotes:

Tel : +44 (0) 28 6774 2606

Fax: +353 (0) 49 9525231

Orders:

Tel : +44 (0) 28 6774 2535

Fax: +353 (0) 49 9525231

Merriott Radiators Ireland

Derrylin, Co. Fermanagh, Northern Ireland, BT92 9AU

For contact numbers please see below.

Email : sales@merriott-radiators.com

Web : www.merriott-radiators.com

Manufacturing Facility Newport

Merriott Radiators, Imperial Park, Newport, Gwent NP10 8ZY

Tel : +44 (0) 1633 657 000

Fax : +44 (0) 1633 657 084

Irish Enquires

Quotes:

Tel : +44 (0) 28 6774 2606

Fax: +353 (0) 49 9525231

Orders:

Tel : +44 (0) 28 6774 2535

Fax: +353 (0) 49 9525231